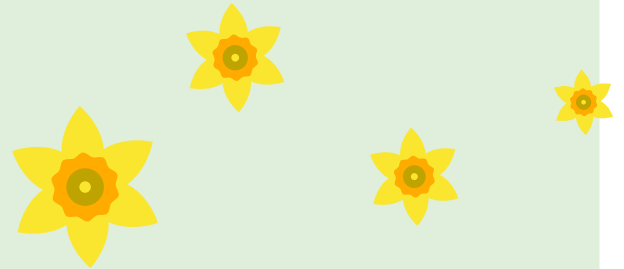




# RESIDE WITH PROGRESS



Following the exciting news that **Reside Housing Association** joined **Progress Housing Group** on **30 September 2021**, supported living colleagues from both organisations have been busy sorting out how they will work together to deliver services. Our new supported living service is called **Reside With Progress**, or **RWP** for short.

With your help, we've also been busy designing RWP's new logo!

We worked with a design agency, colleagues and our tenants to create a new visual identity for Reside With Progress.

To help us to create the logo, we conducted lots of research. We ran a competition to win a box of art materials in our supported living newsletters. We asked tenants what was important about their homes, and we received some amazing responses. We held Zoom meetings with tenants to talk about brands and asked

them what they thought the RWP brand should look like. One of the tenants involved, David, said, "It was really good looking at the new branding. It will be really good to see how my comments have helped with the new design."

We also sent commissioners a survey to complete asking questions about Reside Housing Association and Progress Housing Group.

Once we completed this research, the design agency used all the information to create this Reside With Progress logo – and we hope you like it as much as we do.



**Reside With Progress**

You will start to see this new logo being used for anything related to supported living from 1 April 2022.

Do you have a hobby or interest you would like to share? Why not contact us? See the back page for contact details.

## In this issue:

- Community Support Grant update
- Donna and Adrian to tie the knot
- 'We all fit together' artwork
- Front door reminder from Morgan Sindall
- Scarecrows and sunflowers
- Competition - how many daffodils can you find in this newsletter?



# Community Support Grant update



The Community Support Grant is a way of applying for funding of up to £500 from Progress Housing Group's Community Investment Fund to support community groups and projects.

This grant is aimed at charities, community groups and local networks who want to set up or grow a local project to support their local community and need a small amount of funding to help.

- Garden projects growing vegetables, which promote healthy eating
- A pop-up kitchen to deliver microwave cooking sessions
- Developing a sensory garden

The Community Support Grant has already supported many projects, including:

- Table tennis equipment to help improve health and wellbeing

For more information on how to apply, email [community@progressgroup.org.uk](mailto:community@progressgroup.org.uk) or contact the Progress Involvement Team on 03333 204555.



# Donna and Adrian to tie the knot

LiLAC tenants Donna and Adrian are busy planning their church blessing, which is booked for this month. They are both big Leeds United fans, so they will celebrate afterwards at Elland Road Stadium with their family and friends. Donna told us that she hopes to arrive in style in a limousine!

The happy couple met at school and have been together for a whopping 35 years! Here is a photo of them in front of their planning wall, with some of Adrian's amazing artwork on show too.

**Congratulations to you both from everyone at Progress Housing Group!**



# 'We all fit together' artwork

For last year's Learning Disability Week, tenants participated in the 'We all fit together' Progress Community Artwork Project. We will be continuing with this project to mark this year's Learning Disability Week, the week of 13-17 June 2022.

Tenants decorated individual jigsaw pieces, which were put together to create a giant jigsaw artwork. Here is a photo of the work so far. We will continue to grow the jigsaw and see how big we can make it! If you want to create a jigsaw piece, please contact the Progress Involvement Team for a pack on 03333 204555 or email [community@progressgroup.org.uk](mailto:community@progressgroup.org.uk).



# Front door reminder from Morgan Sindall

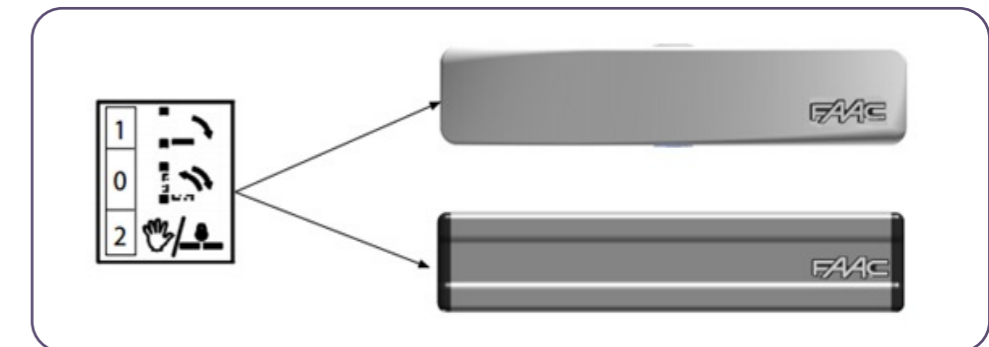
**Morgan Sindall receive a lot of repair calls about front doors. Often the issue is easy to fix without calling out a handyperson. Here is a reminder on how the doors work and what to look out for if they are not working as they should.**

The isolation switch is usually found above the front door and should be pressed down in the 'on' position.

The black bar at the top of the door is a sensor that stops the door from closing onto someone standing in the doorway.

If objects are placed in the doorway, such as boxes or curtains, the sensor will think this is a person, and the door will not close. Objects fixed to the door, such as balloons or banners, can also confuse the sensors. This may lead to the door needing to be reset.

The three switch positions on the door operator are shown in the picture below:



- 1 - The door stays open.
- 0 - The door works automatically. Always return to '0' after use.
- 2 - The door can be opened manually.

To reset the door, turn the switch to the 'off' position and leave it for a minute before turning it back on.

Please check that the door operator is placed in position '0' and that you have completed a reset before reporting a fault to Morgan Sindall. An unnecessary call could mean that you are charged for the visit.





# Scarecrows and sunflowers



After the success of our Virtual Scarecrow Festival last year, we are pleased to announce that we will be running it again this year throughout July and August. We can't wait to see all your fabulous creations!

This year we are including our sunflower competition to see who can grow the tallest sunflower, which will be judged alongside the scarecrows.

Sunflowers can take a long time to grow, so if you would like to take part, you will need to think about planting your sunflower seeds in April/May 2022.

If you would like us to send you a free pack of sunflower seeds to grow your own, please email [community@progressgroup.org.uk](mailto:community@progressgroup.org.uk) or contact the Progress Involvement Team on 03333 204555.

You can upload photos of your entries to both the scarecrow and sunflower competitions on our website [www.progressgroup.org.uk/bloom](http://www.progressgroup.org.uk/bloom) from Friday, 17 June, and any time up to Sunday, 4 September 2022 at 11.59pm.

We can't wait to see your entries, good luck!



# Spring competition

**There is a £10 One4all voucher up for grabs in our spring competition! The closing date for entries is Friday, 29 April 2022.**

How many daffodils can you find in this newsletter? Count how many, then fill in this form with your name and address.

I found \_\_\_\_\_ daffodils

Name: \_\_\_\_\_

Address: \_\_\_\_\_

Tel no: \_\_\_\_\_

## How to enter the competition

1. Take a photo of your entry – don't forget to include your name and address.
2. Email the photo to [enquiries@progressgroup.org.uk](mailto:enquiries@progressgroup.org.uk)

You can also post your entry to Natalie Waring, Progress Involvement Officer, Progress Housing Group, New Pudsey Court, 101 Bradford Road, Pudsey, Leeds, LS28 6AT.

3. The deadline for entries is **Friday, 29 April 2022**.
4. The winner will be the person who is picked from the prize draw.

**Good luck, everyone!**

## Our phone number

**0345 241 6041**

calls are usually free from mobile phones, but please check your mobile contract to confirm.

## Useful addresses and telephone numbers



### LiLAC

Progress Housing Group  
New Pudsey Court  
101 Bradford Road, Pudsey  
Leeds LS28 6AT.

### Opening hours

Monday – Friday 9am – 5pm

## For all enquiries

Tel: 0345 241 6041 –  
press 1 for repairs



### Email:

[enquiries@progressgroup.org.uk](mailto:enquiries@progressgroup.org.uk)

### Web chat:

[www.progressgroup.org.uk](http://www.progressgroup.org.uk),  
Monday to Friday, 8am-5pm  
[www.progressgroup.org.uk/homes/lilac](http://www.progressgroup.org.uk/homes/lilac)

LiLAC News is published by Progress Housing Group and sent to our LiLAC tenants.

If you have any suggestions for the newsletter please get in touch.

### Write to:

Natalie Waring, Progress Involvement Officer, Progress Housing Group, New Pudsey Court, 101 Bradford Road, Pudsey, Leeds LS28 6AT

### Email:

[enquiries@progressgroup.org.uk](mailto:enquiries@progressgroup.org.uk)  
or telephone 0345 2416041



This newsletter is available in audio CD, large print, Braille, or an alternative language.

To request your alternative format, please write to Natalie Waring using our address in Leeds (details above) or emailing [nwaring@progressgroup.org.uk](mailto:nwaring@progressgroup.org.uk)